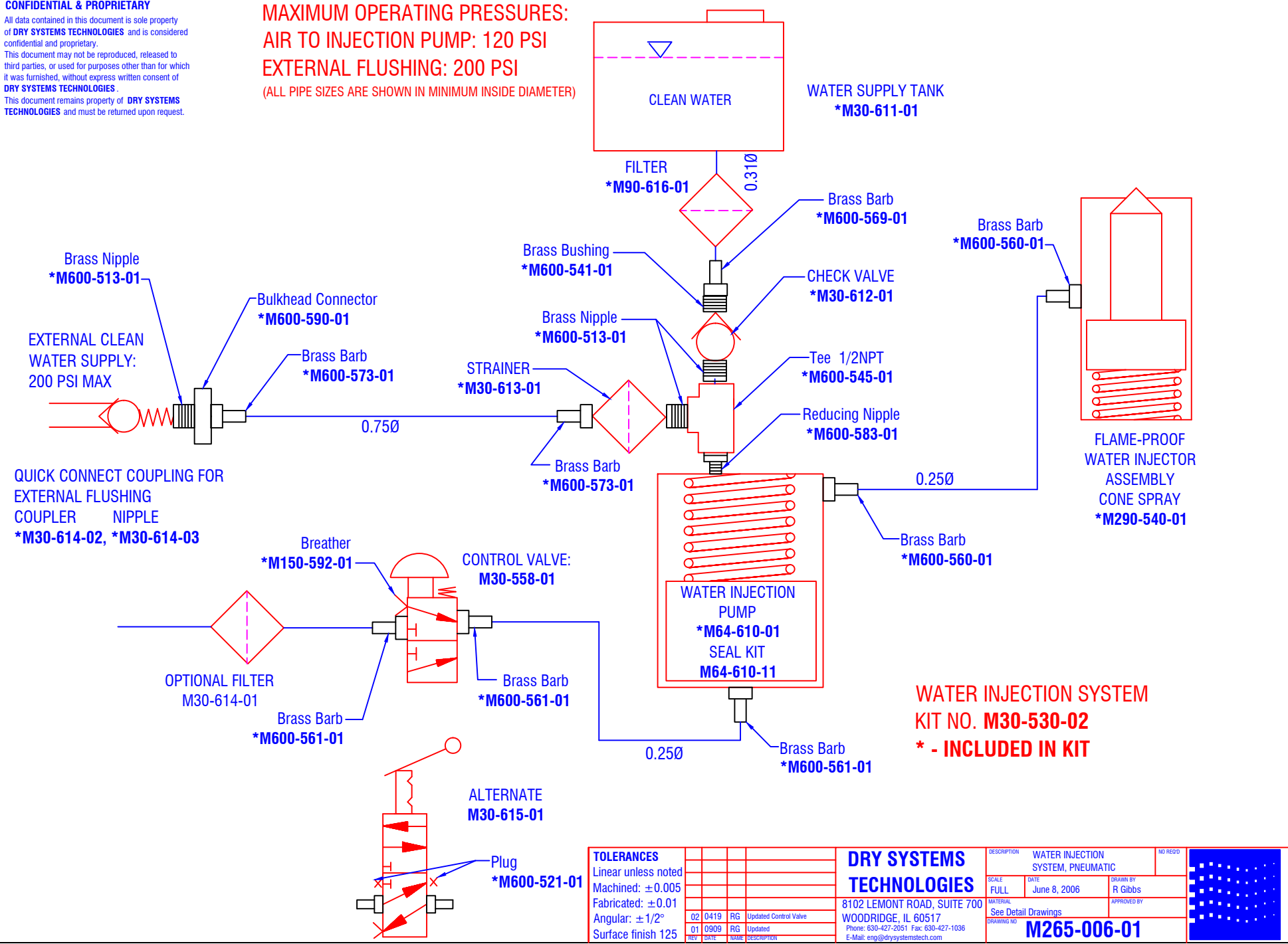


CONFIDENTIAL & PROPRIETARY

All data contained in this document is sole property of **DRY SYSTEMS TECHNOLOGIES** and is considered confidential and proprietary. This document may not be reproduced, released to third parties, or used for purposes other than for which it was furnished, without express written consent of **DRY SYSTEMS TECHNOLOGIES**. This document remains property of **DRY SYSTEMS TECHNOLOGIES** and must be returned upon request.

MAXIMUM OPERATING PRESSURES:
AIR TO INJECTION PUMP: 120 PSI
EXTERNAL FLUSHING: 200 PSI
 (ALL PIPE SIZES ARE SHOWN IN MINIMUM INSIDE DIAMETER)



WATER INJECTION SYSTEM
KIT NO. M30-530-02
*** - INCLUDED IN KIT**

TOLERANCES			
Linear	unless noted		
Machined:	±0.005		
Fabricated:	±0.01		
Angular:	±1/2°		
Surface finish	125		
REV	DATE	BY	DESCRIPTION
02	0419	RG	Updated Control Valve
01	0909	RG	Updated

DRY SYSTEMS TECHNOLOGIES
 8102 LEMONT ROAD, SUITE 700
 WOODRIDGE, IL 60517
 Phone: 630-427-2051 Fax: 630-427-1036
 E-Mail: eng@drysystemstech.com

DESCRIPTION		WATER INJECTION SYSTEM, PNEUMATIC		NO. REVD
SCALE	DATE	DRAWN BY	APPROVED BY	
FULL	June 8, 2006	R Gibbs		
MATERIAL		See Detail Drawings		
DRAWING NO.		M265-006-01		

