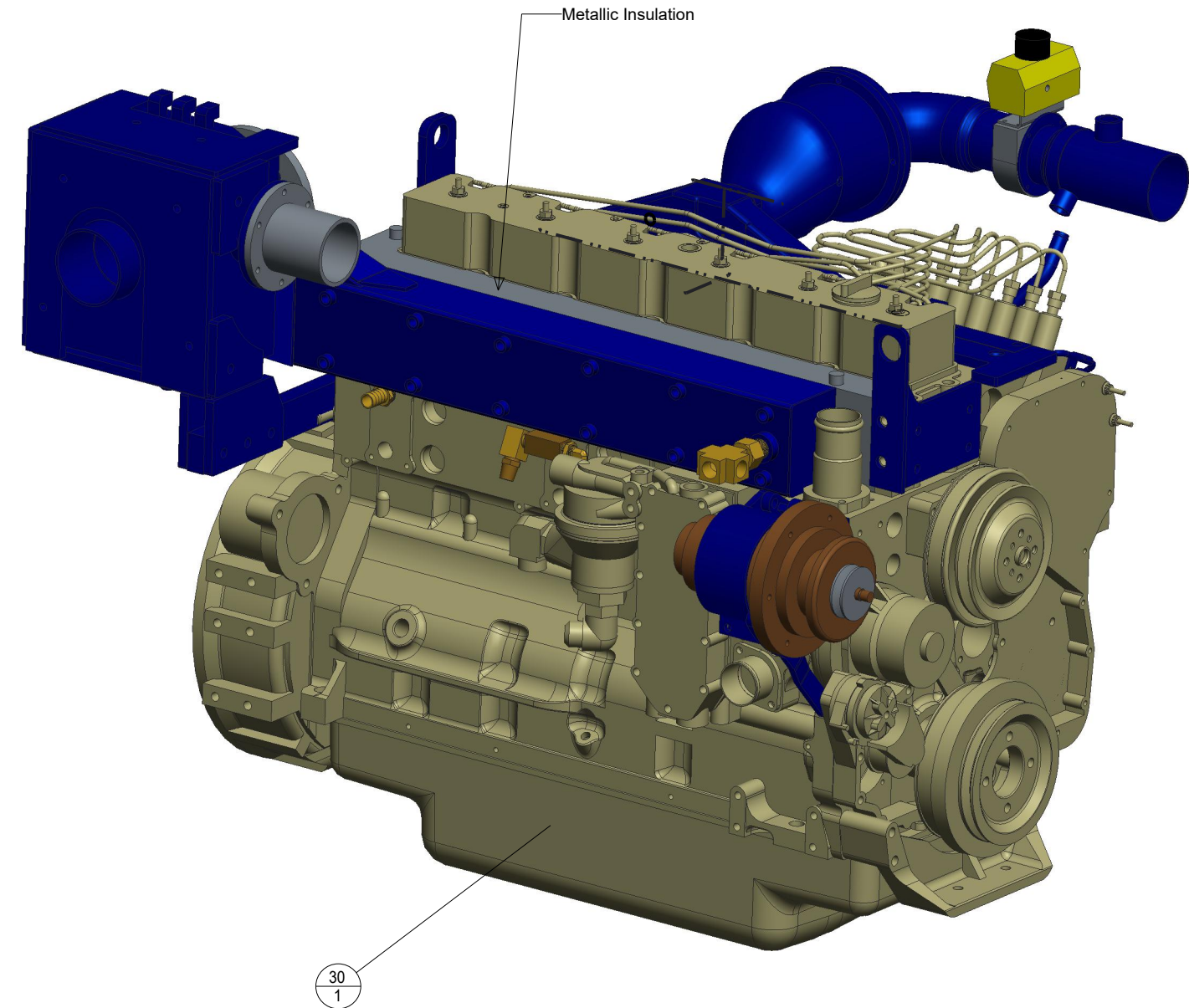


CONFIDENTIAL & PROPRIETARY  
 All data contained in this document is sole property  
 of DRY SYSTEMS TECHNOLOGIES and is considered  
 confidential and proprietary.  
 This document may not be reproduced, released to  
 third parties, or used for purposes other than for which  
 it was furnished, without express written consent of  
 DRY SYSTEMS TECHNOLOGIES.  
 This document remains property of DRY SYSTEMS  
 TECHNOLOGIES and must be returned upon request.

43	M600-578-01	Brass Elbow, 3/8 MNPT x 3/8 Barb	1
42	M600-573-01	Adapter, 1/2" NPT x 3/4" Hose Barb	1
41	M600-570-01	Brass Straight, 3/4 MNPT to 3/4 Barb	1
40	M600-543-01	Brass Bushing, 3/4 MNPT x 1/2 NPTF	1
39	M600-541-01	Brass Bushing, 1/2 MNPT x 3/8 NPTF	1
38	M600-538-01	Brass Adapter, 3/4" NPTF x 1/2" MNTP	1
37	M600-534-01	Elbow, 1/2" NPT MxF Brass 90 deg.	1
36	M600-528-01	Tee, Brass Male Branch 1/2" NPT	1
35	M600-523-01	Cross, 3/4" NPT Brass	1
34	M600-514-01	Brass Nipple, 3/4 MNTP Fully Threaded	1
33	M507-592-03	Tube, Fuel Drain	1
32	M500-530-01	Pulley, A-Belt	1
31	M500-521-01_NO_SHEAVE	Alternator, XP	1
30	M500-211-01	Engine Assembly, Cummins 8.3	1
29	M40-595-01	Port Assembly, Flame Proof	1
28	M329-502-01	Mount, Engine Tag	1
27	M250-544-01	Valve, Diesel Engine Shutdown	1
26	M250-524-01	Bracket, Support	1
25	M250-523-01	Slide, Alternator	1
24	M250-522-01	Mount, Alternator	1
23	M250-521-01	Bracket, Alternator	1
22	M250-520-01	Bracket - Fuel Lines	1
21	M250-501-02	Rod End, Ball Joint, 5/16-24	1
20	M250-291-01	Gasket, Intake Manifold	1
19	M250-290-01	Cover, Intake Manifold	1
18	M250-282-21	Arrestor, Intake Flame	1
17	M250-273-01	Gasket to Engine Manifold	1
16	M250-272-01	Pipe, Intake Adapter	1
15	M250-271-02	Pipe, Flame Arrestor	1
14	M250-233-31	Gasket, Turbo Outlet	1
13	M250-231-31	Shield, Heat - Turbo Outlet	1
12	M250-229-31	Adapter, Turbo Outlet	1
11	M250-215-18	Manifold, Welded Exhaust	1
10	M250-214-01	Gasket, Copper Exhaust	6
9	M250-211-01	Lifting Bracket, 8.3 Cummins	1
8	M250-206-03	Tube, Air Coompressor Inlet, Rev Turbo	1
7	M250-203-01	Flange	1
6	M250-202-01	Bracket, Reverse Turbo	1
5	M250-201-01	Support, Intake Flame Arrestor	1
4	M250-109-31	Reversed Turbocharger, 185HP	1
3	M250-106-01	Fuel Shut-Off Assembly	1
2	M150-570-05	Bracket, Slave Cylinder 8.3	1
1	M150-570-02	Cylinder, Rework	1
ITEM	PART NUMBER	DESCRIPTION	QTY

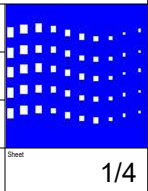


TOLERANCES  
 Linear unless noted  
 Machined: ±0.005  
 Fabricated: ±0.01  
 Angular: ±1/2°  
 Surface finish 125  
 Third angle projection

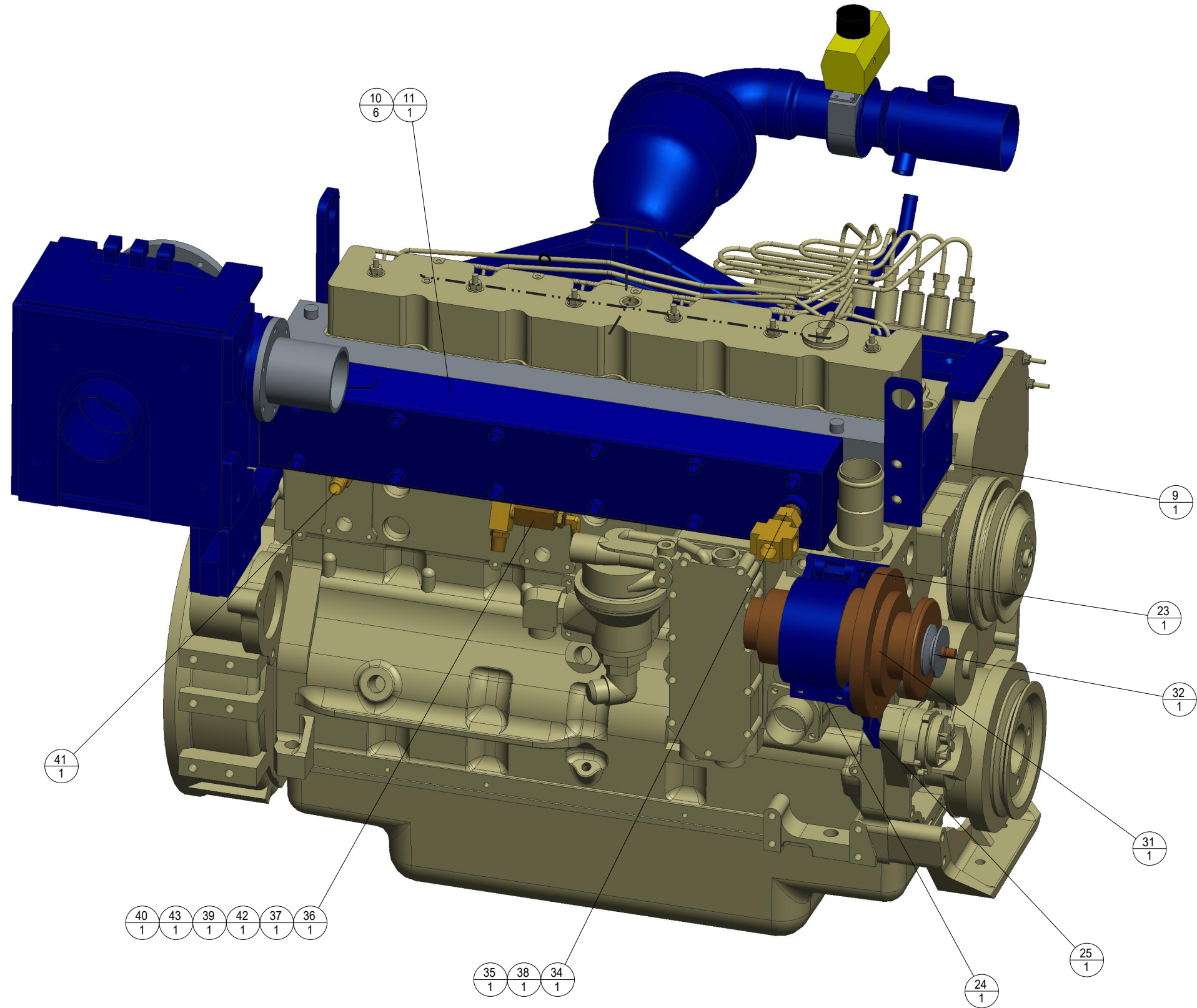
REV	DATE	NAME	DESCRIPTION

**DRY SYSTEMS TECHNOLOGIES**  
 10420 RISING COURT  
 WOODRIDGE, IL 60517  
 Phone: 630-427-2051  
 Fax: 630-427-1036  
 E-Mail: eng@drysystemstech.com

Description: Cummins 8.3 Reverse Turbo		No. Rept:
Scale: 0.125	Date: 10/1/19	Drawn By: JLW
Material: See BOM		Approved By:
Drawing No. M500-211-33		Sheet



CONFIDENTIAL & PROPRIETARY  
 All data contained in this document is sole property  
 of DRY SYSTEMS TECHNOLOGIES and is considered  
 confidential and proprietary.  
 This document may not be reproduced, released to  
 third parties, or used for purposes other than for which  
 it was furnished, without express written consent of  
 DRY SYSTEMS TECHNOLOGIES.  
 This document remains property of DRY SYSTEMS  
 TECHNOLOGIES and must be returned upon request.



TOLERANCES  
 Linear unless noted  
 Machined:  $\pm 0.005$   
 Fabricated:  $\pm 0.01$   
 Angular:  $\pm 1/2^\circ$   
 Surface finish 125  
 Third angle projection

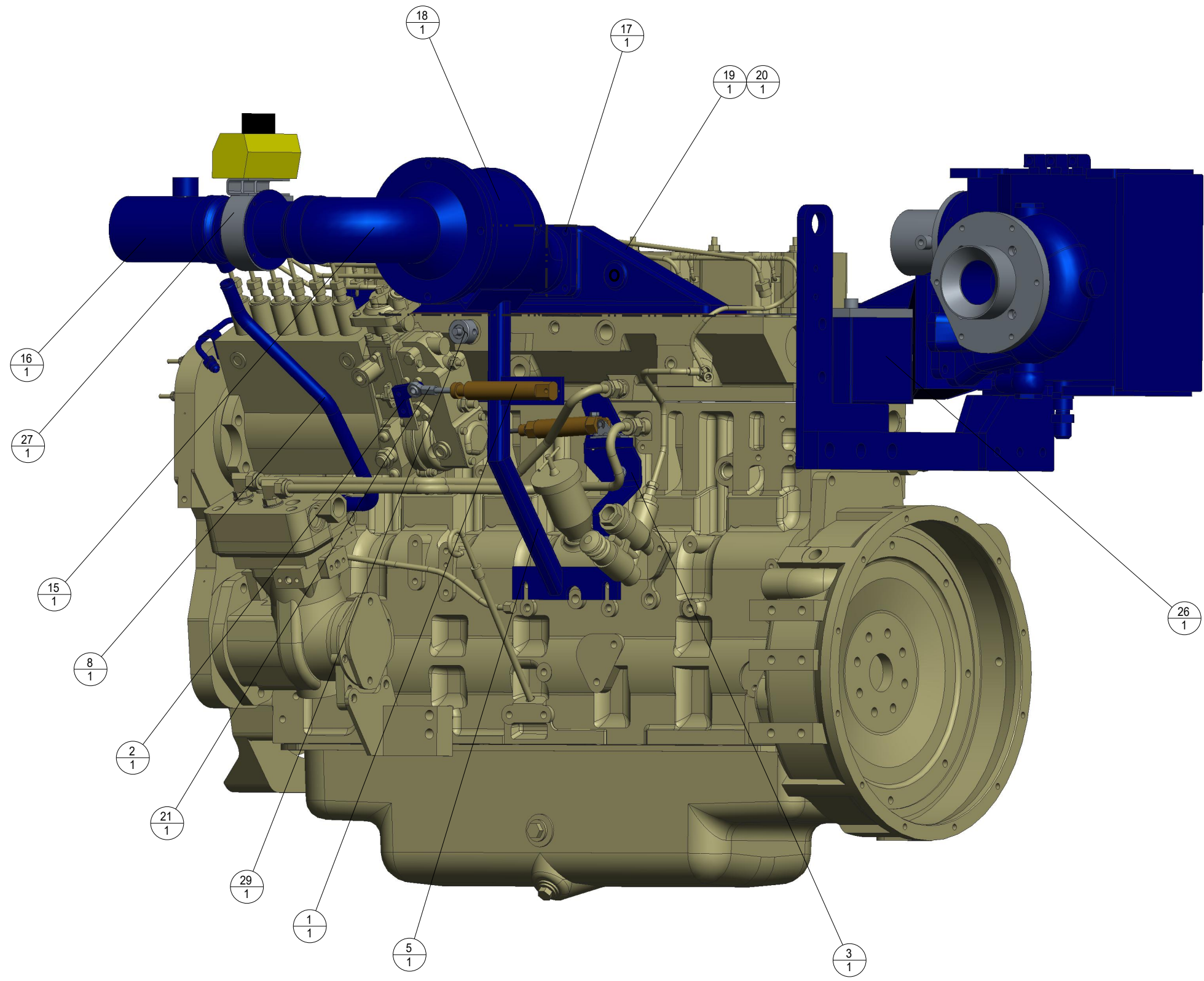
REV	DATE	NAME	DESCRIPTION

**DRY SYSTEMS  
 TECHNOLOGIES**  
 10420 RISING COURT  
 WOODRIDGE, IL 60517  
 Phone: 630-427-2051  
 Fax: 630-427-1036  
 E-Mail: eng@drysystemstech.com

Description: Cummins 8.3 Reverse Turbo  
 Scale: 0.160 Date: 10/1/19 Drawn By: JLW  
 Material: See BOM Approved By:  
 Drawing No: M500-211-33



CONFIDENTIAL & PROPRIETARY  
 All data contained in this document is sole property  
 of DRY SYSTEMS TECHNOLOGIES and is considered  
 confidential and proprietary.  
 This document may not be reproduced, released to  
 third parties, or used for purposes other than for which  
 it was furnished, without express written consent of  
 DRY SYSTEMS TECHNOLOGIES.  
 This document remains property of DRY SYSTEMS  
 TECHNOLOGIES and must be returned upon request.

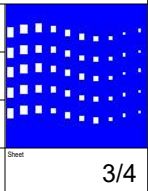


TOLERANCES  
 Linear unless noted  
 Machined:  $\pm 0.005$   
 Fabricated:  $\pm 0.01$   
 Angular:  $\pm 1/2^\circ$   
 Surface finish 125  
 Third angle projection

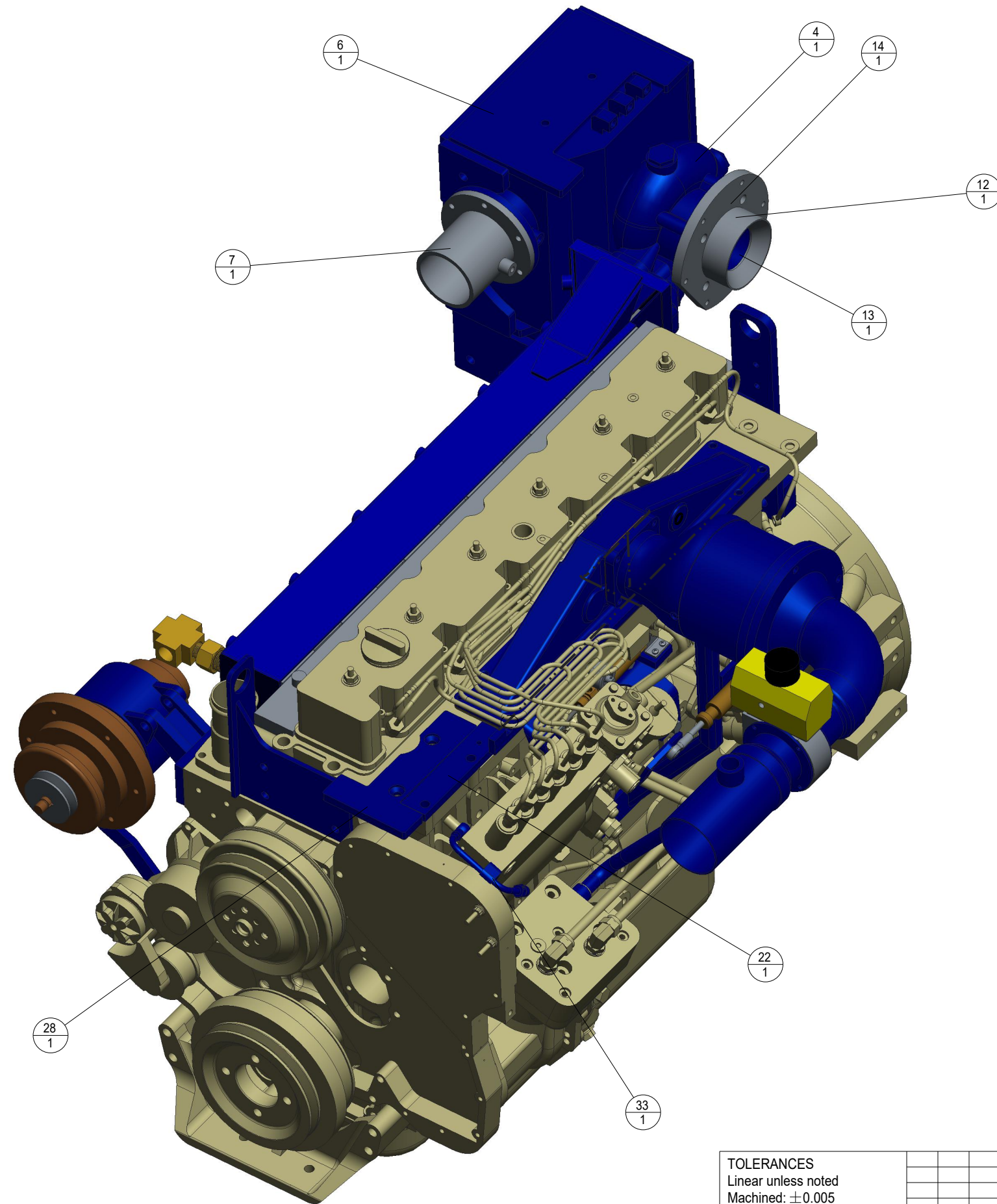
REV	DATE	NAME	DESCRIPTION

**DRY SYSTEMS  
 TECHNOLOGIES**  
 10420 RISING COURT  
 WOODRIDGE, IL 60517  
 Phone: 630-427-2051  
 Fax: 630-427-1036  
 E-Mail: eng@drysystemstech.com

Description: Cummins 8.3 Reverse Turbo		No. Reqd:
Scale: 0.160	Date: 10/1/19	Drawn By: JLW
Material: See BOM		Approved By:
Drawing No: M500-211-33		Sheet:



CONFIDENTIAL & PROPRIETARY  
 All data contained in this document is sole property  
 of DRY SYSTEMS TECHNOLOGIES and is considered  
 confidential and proprietary.  
 This document may not be reproduced, released to  
 third parties, or used for purposes other than for which  
 it was furnished, without express written consent of  
 DRY SYSTEMS TECHNOLOGIES.  
 This document remains property of DRY SYSTEMS  
 TECHNOLOGIES and must be returned upon request.



TOLERANCES  
 Linear unless noted  
 Machined:  $\pm 0.005$   
 Fabricated:  $\pm 0.01$   
 Angular:  $\pm 1/2^\circ$   
 Surface finish 125  
 Third angle projection

REV	DATE	NAME	DESCRIPTION

**DRY SYSTEMS  
 TECHNOLOGIES**  
 10420 RISING COURT  
 WOODRIDGE, IL 60517  
 Phone: 630-427-2051  
 Fax: 630-427-1036  
 E-Mail: eng@drysystemstech.com

Description: Cummins 8.3 Reverse Turbo		No. Reqd:
Scale: 0.160	Date: 10/1/19	Drawn By: JLW
Material: See BOM		Approved By:
Drawing No. M500-211-33		Sheet:

